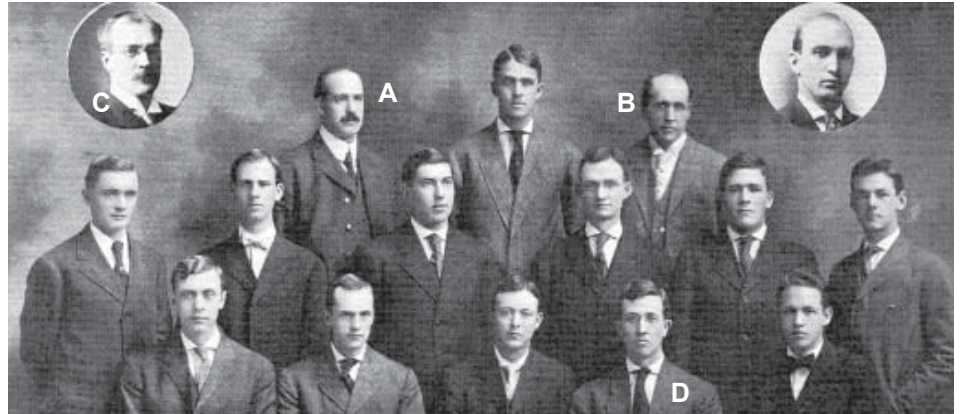


Beta Gamma Sigma: Excellence Since 1913

This photo shows the first inductees of the local BGS at the University of Wisconsin in 1907. A) D. Earle Burchell, B) Stephen W. Gilman, C) William A. Scott: the name of the Society was formed from the initials of these three men.

D) Fayette H. Elwell, here a junior, became the Society's first president when it became a national organization in 1913.



Beta Gamma Sigma forms as a National Honor Society **1913**

1919 AACSB (now known as AACSB International) recognizes BGS as the only scholastic honor society in business

Beta Gamma Sigma inducts first women to lifetime membership following merger with Gamma Epsilon Pi **1933**

1963 Beta Gamma Sigma celebrates its 50th anniversary

Society creates Board of Governors as its governing body; inducts its 100,000th lifetime member **1975**

1988 Beta Gamma Sigma celebrates its 75th anniversary and establishes the Scholarship Program

First chapter outside the U.S. installed at the University of Calgary **1989**

1998 Society expands the Alumni Chapter Program; inducts 400,000th member

First chapter outside North America established at The Chinese University of Hong Kong **2000**

2003 Beta Gamma Sigma will celebrate its 90th anniversary; Society will induct its 500,000th member

Beta Gamma Sigma Founders' Day - February 19, 2003

Most everyone reading this issue of the *BGS News* knows about Beta Gamma Sigma, the honor society for business programs accredited by AACSB International – The Association to Advance Collegiate Schools of Business. Most know that membership in Beta Gamma Sigma is for a lifetime, recognizing the outstanding academic record earned in the world's best business schools. Even the fact that Beta Gamma Sigma is preparing for its 90th anniversary year should shock few that regularly read this newsletter.

But how many know the story of the Economics Club at the University of California? Or Delta Kappa Chi at the University of Illinois? Or Gamma Epsilon Pi? Do you know when women were first inducted into the Society? When was the first National Honoree Award (now known as the International Honoree Award) presented? Where did the name "Beta Gamma Sigma" originate? When did the Society begin awarding scholarships to outstanding student members?

All of these stories – and many, many more – make up the rich history of Beta Gamma Sigma. As we look forward to our 90th anniversary on February 19, 2003, we also take a look back at the founding of

the Society and some of the important milestones that helped it reach the heights it enjoys today.

Forming the National Organization

Beta Gamma Sigma was formed as a national organization in 1913 from the merger of three campus organizations at the University of Wisconsin (Beta Gamma Sigma), University of Illinois (Delta Kappa Chi) and University of California (the Economics Club). According to Fayette H. Elwell, author of *The First 50 Years of Beta Gamma Sigma* (and eventually the first president of the national organization), BGS got its start from an idea presented by Alfred L. Sommers, a 1907 senior in the School of Commerce at the University of Wisconsin. He proposed the development of an honor-ary fraternity to Prof. D. Earle Burchell. With Burchell's blessing, Sommers forwarded the idea to William A. Scott (then director of the School of Commerce) and Stephen W. Gilman (another professor in the school). These three "top" professors at the school encouraged Sommers to go ahead with his idea.

According to Elwell, "It was voted to have a name consisting of Greek words having as their first letters the initials of the three professors: Burchell, Gilman and (see History on page 2)

History (cont. from page 1)

Scott – the alphabetical order was followed so no one might be offended by his position in the combination of letters.” There was no meaning given to the letters until the founding of the national organization in 1913, when a professor in the Greek Department assigned *Bebaeos* (which signifies honor), *Gnosis* (meaning wisdom), and *Spoude* (meaning earnestness) to the initials.

At approximately the same time, the Economics Club on the campus of the University of California had formed for a similar purpose: “It is regarded chiefly as an honor society, its members being chosen from those students who have proven their ability and interest in Economic work.” Referring to the years 1912-1913, the California Annual wrote: “The measure of a departmental honor society is its value to the college it represents. The Economics Club, then, is an honor society in the best sense of the word.”

At the University of Illinois in 1910, a group of high-achieving students came together to form Delta Kappa Chi, which was “destined to bear the same relation to students in the business courses as Phi Beta Kappa bears to students in the College of Literature and Arts,” according to the University of Illinois’ Alumni Quarterly.

Elwell wrote that the first meeting to discuss the consolidation of Beta Gamma Sigma and Delta Kappa Chi was held in Chicago during the Christmas holidays of 1910. Apparently the results of this first meeting were unsatisfactory to both parties, but the effort continued in the following years. For instance, there was a compromise proposed by the local Beta Gamma Sigma at the University of Wisconsin that the name be changed to Beta Gamma Delta. The officers of Delta Kappa Chi responded, “There is no reason why we should have you give up a letter.”

The successful meeting to organize one national scholarship honor society in business and commerce was held on February 19, 1913 – the recognized founding date of Beta Gamma Sigma. The

officers were elected, the design of the new key insignia was approved, and for the first time Beta Gamma Sigma was something more than a local club. By the end of 1917, Beta Gamma Sigma had added two more chapters – at Columbia University and the University of Pennsylvania – and the Society grew steadily after that.

AACSB International

Action was initiated in 1919 to establish Beta Gamma Sigma as the only scholastic honor society recognized by the American Assembly of Collegiate Schools of Business (AACSB). This organization, renamed AACSB International – The Association to Advance Collegiate Schools of Business, includes in its membership collegiate schools of business that meet high standards of eligibility required of accredited member institutions with respect to curricula, teaching staff, teaching loads, library and laboratory facilities. Beta Gamma Sigma amended its constitution in 1921 to restrict the installation of new chapters to collegiate schools of business that were accredited members of AACSB. That relationship still exists today.

Women in Beta Gamma Sigma

The constitution adopted in 1913 stated that “membership shall be limited to the male sex.” According to various sources, the issue of admitting women into the Society was discussed on many occasions, but the constitution was not changed until 1933. An interesting side note is that the local Beta Gamma Sigma at the University of Wisconsin did not bar women from joining, and one woman, Margaret Johnson, was elected to membership in 1912. Because all members who had joined prior to 1913 automatically became lifetime members of the new national organization, Ms. Johnson was the first – and possibly only – female member of the Society until 1933.

Because no movement was taking place to admit women, several female students at Columbia University formed Alpha Gamma Pi, a commerce honor society for women. By 1919, two other organizations had formed to honor the

academic achievements of women in business – Gamma Epsilon Chi at the University of Illinois and Phi Sigma Chi at the University of Washington. In 1922, Gamma Epsilon Chi and Phi Sigma Chi merged into Gamma Epsilon Pi, which became the national female honor society for business and commerce students.

It was finally decided in 1932 – with a nearly unanimous vote by the chapters – that women should be eligible for invitation to Beta Gamma Sigma. Elwell wrote “there were now two honor organizations in schools of business to which women could be elected – Gamma Epsilon Pi for women only, and Beta Gamma Sigma for men and women. Since Beta Gamma Sigma had been recognized by AACSB as *the* honorary scholarship fraternity in the schools of business, its officers were particularly interested in a consolidation of the two organizations.” In April 1933, Beta Gamma Sigma and Gamma Epsilon Pi merged, with members of Gamma Epsilon Pi becoming immediate lifetime members of Beta Gamma Sigma.

Today, women make up more than 40 percent of the total number of Beta Gamma Sigma members.

An International Honor Society

In 1989, the University of Calgary became the first chapter established outside the United States. There are two other chapters in Canada – Concordia University and The University of Manitoba – and two in Hong Kong – Hong Kong University of Science and Technology and The Chinese University of Hong Kong. Plans are underway to establish several chapters in various parts of the world in the near future.

Further, more than 16,000 Beta Gamma Sigma members reside in more than 160 countries around the world. As the world of business has become increasingly international, so has Beta Gamma Sigma.

BGS Benefits and Programs

Beta Gamma Sigma, throughout its history, has offered valuable benefits to its members. The most obvious has been the recognition for outstanding academic

(see History on page 4)

Beta Gamma Sigma 2002-03 Scholarship Recipients



Sommer Huff
University of Arkansas



William M. Dudley
East Carolina
University



Christopher J. Jaquet
Fort Lewis College



Jonathan D. Eade
Indiana University
Southeast



Alan M. McMenamin
La Salle University
**Honorable Mention
Chapter**



Ivan Brown
Longwood College



Rhonda M. Lalonde
University of Louisiana
at Lafayette



Mignon C. Begnaud
University of Louisiana
at Monroe - **Honorable
Mention Chapter**

A Message from the President

Help Us Celebrate BGS' 90th Anniversary

As 2002 comes to a close and we prepare as an honor society to enter our 90th anniversary year of 2003, I thought it appropriate to highlight some of the ways Beta Gamma Sigma's lifetime membership can remain a significant part of members' lives. From the student to the retiree, membership can bring a variety of valuable and worthwhile benefits.

For students who have just recently accepted the invitation to join Beta Gamma Sigma, several programs are designed to assist in their continuing education and successful entry into the professional world. The Beta Gamma Sigma Scholarship Program has grown by leaps and bounds. This year alone more than \$75,000 was awarded to the Society's most outstanding student members; more than \$700,000 has been awarded by Beta Gamma Sigma and its member deans over the last 15 years. We have completed our third annual Student Leadership Forum, which brought together high-achieving collegiate members to help them prepare for the leadership challenges of the next phase of their lives.

Following graduation, business professionals in the United States continue to benefit from their lifetime membership through the Society's Alumni Network Program. Members stay connected to Beta Gamma Sigma and other high-achieving members through participation in one of the 16 alumni chapters established around the country. The chapters have become invaluable networking tools for members.

The redesigned BetaNet website and BetaLink On-Line Community provide opportunities for members outside the U.S. to stay connected with the Society from anywhere around the globe. In 2003,

members will find a greatly improved on-line community that will provide additional value to the membership.

Finally, I encourage everyone to display their Beta Gamma Sigma membership proudly. On your resume, be sure to include the BGS key graphic in the "Honors and Awards" section; request a member verification letter to include with applications and resumes; wear Beta Gamma Sigma regalia items to school, work or social events. Information on any of these benefits can be found on the enhanced BetaNet website at www.betagammasigma.org.

A large portion of Beta Gamma Sigma's budget is provided by the low, one-time membership fee that is collected when a student is inducted into BGS. Unlike most honor societies in other academic disciplines, Beta Gamma Sigma does not require members to pay annual dues to maintain active membership status. Once you accept invitation to join the Society, there is no other financial obligation to remain an active member of Beta Gamma Sigma.

We are grateful, however, that many members choose to help Beta Gamma Sigma improve and expand its programs and services by making tax-deductible contributions to the Society. Without the generosity of our members, many of the benefits of membership would not be possible. I would like to personally thank all those who have assisted us in our quest to make Beta Gamma Sigma more beneficial and meaningful in all members' lives.

I encourage you to take advantage of the Beta Gamma Sigma programs that are available to you. Make sure you are not missing out on benefits and services that could be valuable for you and your career.



Dennis Weidenaar



Key Notes

New Beta Gamma Sigma Career Center Coming in Fall 2003

Society Needs Your Help

Coming fall 2003, Beta Gamma Sigma will debut an exciting new feature that is sure to please many members. Because of numerous requests from job seekers and those looking to fill positions, the Society is planning an entirely new on-line job/career site that caters to members' needs. Beta Gamma Sigma has begun working on this new project now to ensure that it meets the needs of as many members as possible.

Currently, members can search for job assistance at the Career Center of BetaLink, the Society's on-line community, but the "coming-soon" version of the BGS Career Center will offer next-generation technology that allows job seekers and recruiters to come together in a more efficient fashion. Beta Gamma Sigma is seeking to provide some of the best features of sites such as Monster.com and HotJobs.com while keeping the site an exclusive member benefit, accessible only to Beta Gamma Sigma members. The Society envisions this new service to be one of the most valuable to members at all levels of their professional lives – from those who have recently graduated, to those at mid-levels, to seasoned, long-term managers.

"This new Career Center will match those seeking good positions with outstanding organizations – whether Fortune 1000 firms or small businesses with human resources and management positions filled by Beta Gamma Sigma members – that are looking for the best candidates available," said Vicki Klutts, associate executive director of Beta

(see Key Notes on page 6)



Delta L. Rushing
University of Louisiana
at Monroe



Rose A. Fortner
Loyola University



Carrie M. Rich
University of Maine



Deborah Hiser
Loyola Marymount
University



Sarah B. Ahnen
Michigan Technological
University



Jill M. Eggerichs
University of
Minnesota-Duluth



**Alexander P.
Louis-Jeune**
Morehouse College



Diane A. Clunie
New York University

Society to Give Away 90 Paperweights

Part of BGS' 90th Anniversary Celebration

As Beta Gamma Sigma plans its activities for Founders' Week, Feb. 16-22, 2003, all members are invited to take part and show pride in their membership. As a special incentive for members to get in the spirit of the Society's 90th anniversary, 90 Beta Gamma Sigma key paperweights, valued at \$20 each, will be given away. To participate in this special offer, members must respond by January 31, 2003.



To reply by email, just send a message to anniversary@betagammasigma.org and provide your full name, your name at the time you were inducted (if different), complete mailing address and the name of the school where you were inducted. If you would like to participate by regular mail, please provide the same information to Beta Gamma Sigma, 11701 Borman Drive, Suite 295, St. Louis, MO 63146-4199. Mailed entries must be postmarked by January 31, 2003 to be eligible. Ninety winners will be randomly selected from the entries received.

The Society is asking all members to consider wearing their key pins or Beta Gamma Sigma apparel to work or social functions during the week of Feb. 16-22. This is a great opportunity to let others know about Beta Gamma Sigma and about your recognition as one of "the best in business." Items, including the lapel key pin costing \$7.00, can be found on the BetaNet website at www.betagammasigma.org. Additionally, if you live in one of the metropolitan areas with a Beta Gamma Sigma alumni chapter, check the website to see if your chapter is planning any special Founders' Week activities.

History (cont. from page 2)

performance in business and management. Equally important is the lifetime membership in the Society; once someone accepts membership in the Society and pays the low lifetime fee there is no further financial obligation. Many honor societies charge annual dues to remain an active member of the society, but not Beta Gamma Sigma.

During its 75th anniversary year of 1988, the Society began awarding scholarships to some of its most outstanding student members to help defray the cost of continuing their education. To date, Beta Gamma Sigma, in conjunction with its member deans, has awarded over \$700,000 in scholarships.

The Society's first alumni chapter was established in New York City in 1932. In recent years, the Board of Governors has made it a priority to find ways to increase

the value of lifetime membership long after graduation. With the development of the Alumni Network, Beta Gamma Sigma now has 16 alumni chapters in major metropolitan areas across the country.

In 2000, Beta Gamma Sigma held its first Student Leadership Forum. This annual Forum brings together student representatives of chapters across North America (and in the future, around the world) to examine issues of leadership. This program is designed to help students make the transition from successful college student to successful professional.

Each year, chapters have the opportunity to recognize outstanding professionals by nominating them for the Beta Gamma Sigma Medallion for Entrepreneurship or Business Achievement Award. The Society's top honor for practicing business professionals, the

Sinegal (cont. from page 8) advertising campaign by NASDAQ.

"Our mission as a company is very succinct: we simply try to sell products and services for less than every other business around," Sinegal once said in an interview. "In order to do that, we must respect all of the stakeholders in our company: our customers, employees, suppliers and the communities where we do business."

Sinegal helped create the Costco Scholarship Fund, designed to provide qualified minority students with full tuition assistance. In its first year alone, the funds enabled 174 selected students to receive tuition assistance for the duration of their college careers at Seattle University and the University of Washington.

The Beta Gamma Sigma Chapter at Seattle University nominated Sinegal for the Business Achievement Award.

International Honoree Award, is conferred upon those who have furthered the ideals of our Society through outstanding business and managerial leadership and/or meritorious contributions to education for business and administration. The award was first established by Beta Gamma Sigma in 1963 and was known until 1999 as the National Honoree Award.

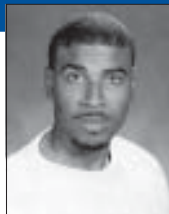
By the Numbers

Currently, 373 collegiate chapters of Beta Gamma Sigma induct nearly 20,000 new student members each year. A total of more than 480,000 people have been inducted into the Society in its history and approximately 310,000 members received this issue of the *BGS News* newsletter. Beta Gamma Sigma communicates with nearly 45,000 members regularly through email, and hopes to increase that number significantly in the coming years. As mentioned before, there are 16 alumni chapters established in major metropolitan areas across the country. In the last year alone, Beta Gamma Sigma awarded more than \$75,000 in scholarships to student members. In 2003, Beta Gamma Sigma will induct its 500,000th member.

Beta Gamma Sigma 2002-03 Scholarship Recipients (cont.)



Kara M. Authement
Nicholls State
University



Clarence E. Phillips, Jr.
North Carolina A&T
State University



Kristin E. Horn
University of
Northern Colorado



Kevin Yeo
Oregon State
University



Angela R. Zemen
Purdue University



Eric A. Barner
Rochester Institute
of Technology



Spencer E. Read
St. Mary's University



Laura L. Hill
Salisbury University

ALUMNI NETWORK UPDATE

Atlanta Area Alumni Chapter

www.bgs-atlanta.org

Roundtable Discussion on Business Ethics - *January 21, 2003; 6 pm; Five Seasons Brewing, 5600 Roswell Rd.*
Atlanta Evening Get-Togethers - *third Tuesday each month; Five Seasons Brewing*

Boston Area Alumni Chapter

www.bgsboston.org

Chicagoland Alumni Chapter

www.betagammasigma.org/chicago.htm

Social Event - *January 23, 2003 (TBA)*
Educational Event - *March 2003 (TBA)*

Dallas/Ft. Worth Area Alumni Chapter

www.betagammasigma.org/dallasfortworth.htm

Houston Area Alumni Chapter

www.betagammasigma.org/houston.htm

Los Angeles Area Alumni Chapter

www.bgsia.org

Career Night - *January 2003, Long Beach, Calif. (TBA)*

Minneapolis/St. Paul Area Alumni Chapter

www.betagammasigma.org/twincities.htm

Networking Event - *Feb. 19, 2003 (TBA)*

New York City Alumni Chapter

www.bgs-nyc.org

Annual Economic Forecast - *Fall/Winter 2002-03 (TBA)*

Philadelphia Area Alumni Chapter

www.betagammasigma.org/philadelphia.htm

Phoenix Area Alumni Chapter

www.betagammasigma.org/phoenix.htm

Kickoff Event - *Feb. 19, 2003; 5:30 - 7:30 pm; The University Club, 39 E. Monte Vista Rd. More details will be mailed to members in Phoenix area.*

St. Louis Area Alumni Chapter

www.betagammasigma.org/stlouis.htm

San Diego Area Alumni Chapter

www.betagammasigma.org/sandiego.htm

San Francisco Area Alumni Chapter

www.bgsf.org

Third Annual Careers Program - *January 16, 2003; 6 pm; The Old Spaghetti Factory, 61 Webster Rd., Oakland*

Seattle Area Alumni Chapter

www.betagammasigma.org/seattle.htm

South Florida Area Alumni Chapter

www.betagammasigma.org/southflorida.htm

Kickoff Event - *February 19, 2003*
Details will be mailed to members in the South Florida area.

Washington, D.C. Area Alumni Chapter

www.betagammasigma.org/washingtondc.htm

Alumni (cont. from page 8)

tially related to our mission (we did learn about the value of teamwork and group decision-making in achieving the goal of finding our way along the trails), we did receive enough responses to determine that this kind of event is attractive to members."

Yamamoto said the chapter is considering events for the coming year.

"In the future, perhaps, our informal events may be more directly related to business," he said. "For example, we may have an evening out at the theater, where the play may involve business topics in some way. "Glengarry Glen Ross" is one example of a show where members can talk about the business and personal issues raised by the play afterward. Or we may attend a major or minor league baseball game where the general manager talks about the business of managing a sports team.

"One of our members operates his own winery in the Napa Valley. Perhaps we can schedule a trip there where he can talk about the wine business and what it's like to own a small company."

The Bottom Line

No matter what the event or where it takes place, the goal of the Beta Gamma Sigma Alumni Network is to bring members together. Members say networking is the most valuable benefit of the program.

"Perhaps my favorite networking success story is a personal one," Yamamoto said. "When a BGS member contacts us and shows some interest in being active in the chapter, I will usually offer to meet with him or her personally.

"At one of these meetings, I found out that the member had just started her own company with her husband. After she described her company, I remembered that I knew of a professor at a local university who had conducted extensive research in their sports-related industry, so I sent her the professor's contact information. They met, and she has told me that their conversations have been very useful.

"I think that these kinds of networking experiences are the essence of why BGS members will join our alumni chapters."

Beta Gamma Sigma regularly sends email updates to members about alumni events in their area. To receive these updates, please send your name, mailing address and email address to:

alumni@betagammasigma.org



Jennifer Killian
University of
Scranton



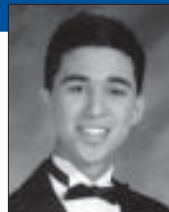
Karen L. Page
Shippensburg
University



Christie M. Olson
Southeast Missouri
State University



Pamela R. Erway
Southwest Missouri
State University



Miguel Lozano, III
Stephen F. Austin
State University
Bronze Chapter



L. Brooke Nix
Stephen F. Austin
State University



Allan C. Cook
Stetson University



Stephen P. Hoeck, Jr.
Towson University
Gold Chapter

Meet the New Board Member

George Stevens

As a continuing feature in the *BGS News*, Beta Gamma Sigma introduces members of the Board of Governors. **George E. Stevens**, Dean of the College of Business Administration and the Graduate School of Management at Kent State University, is featured in this issue. The school, with under-graduate, graduate and doctoral programs, serves over 4,500 students.



Prior to his Kent State appointment, Stevens was Dean of the School of Business Administration and Professor of Management at Oakland University from January 1991 until June 1995. In 1989-90, he served as Interim Dean of the College of Business Administration at the University of Central Florida.

Stevens has done extensive research in the areas of employment discrimination,

performance appraisal, recruitment, selection and stereotyping behavior. His diverse employment background includes positions as a financial analyst at Xerox Corporation and internal placement coordinator, recruiter and assistant to the director of employee relations at Rohm & Haas. He has conducted training and development programs for the American Cancer Society, Arizona State University, University of Miami, University of Central Florida, Kennesaw State University, Motorola

Corporation and the Social Security Administration.

Stevens is a member of the Graduate Management Admissions Council's Professional Standards Committee, a trustee and president of the Kent Regional Business Alliance, and a board member of the AARP Advisory Council. As a former

student-athlete, he serves as Kent State's Faculty Athletic Representative, and serves on the university's Foundation Board. He served a three-year term as a member of AACSB International's Business Accreditation Committee and has been active in AACSB in many other ways. Stevens consults with many business schools, especially those at Historically Black Colleges and Universities.

Delaware State University inducted Stevens into its Alumni Hall of Fame in 1997, and the American Cancer Society presented him with a special citation for his work with the National Health Coordinator Leadership Institute. The Ph.D. Project Information Systems Doctoral Student Association honored Stevens for his "outstanding service, leadership and commitment to the Information Systems profession."

Stevens earned a Doctor of Business Administration (DBA) from Kent State University; an MBA from Washington University; a BA from Thomas A. Edison College; and a BS in business administration from Delaware State University.

Key Notes (cont. from page 2)

Gamma Sigma. "We have received the request from numerous members to help them with career opportunities, and this new service should open avenues for them that otherwise would not exist. We are very excited because this is another opportunity to meet our members' needs and expectations."

As always, Beta Gamma Sigma is hoping for assistance from members in developing this new service. While there has already been contact between the Society and a handful of Fortune 1000 organizations that are eager to pilot the program, more are needed to make the kind of progress that is necessary over the next several months. With the assistance of the right people, the Career Center can be one of the Society's most valuable.

"As our Board members have said many times in the past, 'Our most

valuable asset is the collective talent of our membership,'" Klutts said. "We are looking for individuals who work at decision-making levels of human resource departments – people who can help us get the most out of this service – that are willing to provide some input as we kick this program off. As we get nearer a launch date, we also need organizations that are interested in advertising openings with us.

"Because after all, if you're interested in hiring the best in business, you should be interested in hiring members of Beta Gamma Sigma."

If you would like to assist the Society as it develops this new member service, or to get more information on the new Beta Gamma Sigma Career Center, contact Vicki Klutts at bgshonors@betagammasigma.org. We need your help to make this new member benefit a success.

Avis Discount

Beta Gamma Sigma members receive special Avis car rental rates by using Avis Worldwide Discount Number L492070.

Not only do members receive a discount on their car rental, but the Society benefits as well. Every time members use the number on their Avis contracts, regardless of other over-the-counter promo rates or discount agreement rates, Beta Gamma Sigma accrues benefits.

BGS LogoLine

Would you like to display your pride in Beta Gamma Sigma at the office? How about a gift for that special BGS member? The BGS LogoLine has what you need.

Check out the latest selection of BGS apparel and gift items at: www.betagammasigma.org/regalia.htm or call or email the Central Office to receive the full-color LogoLine catalogue.

Beta Gamma Sigma 2002-03 Scholarship Recipients (cont.)



Julia A. Michael
Towson University



Alicia M. Busse
Truman State University



Kristen E. Stutz
Wake Forest University



Katherine R. Beall
West Virginia University



Dana N. Moore
Western Carolina University



Sabita Sawhney
Western Illinois University



Dana M. Smith
Western Kentucky University



Geordie A. Stutzman
College of William and Mary

Beta Gamma Sigma Contributors

June 1 - October 31, 2002

Contributors to Beta Gamma Sigma are recognized in club categories and named in each issue of the *BGS News*. Members of the President's Club have given \$1,000 or more; the Key Club - \$500 or more; and the Century Club - \$100 or more. The current listings include those who have given during the period June 1 - October 1, 2002.

CENTURY CLUB - \$100

University of Akron
Isidore C. Myers
University of Alabama
Donald W. Nalley
University of Arizona
David P. McElvain
University of Arkansas
Carl R. Frear
Edwin N. Harpole
Ball State University
Philip H. Sprowl
Baruch College, CUNY
Anthony K. Adjei
Murray H. Neidorf
Samuel G. Ryan, Jr.
Baylor University
Tim D. Brewer
Boise State University
Sharon E. Nielsen
Boston College
Richard E. Benchley
James R. Kearnan
William C. McInnes, SJ
Boston University
Gitta M. Kurlat, Esq.
University at Buffalo, SUNY
Burton Notarius
University of California
Bruce C. Bernhard
University of California, Los Angeles
Ridgway L. Pope
Wilbur B. Seaton*
California State University, Long Beach
Dan M. Berns
Rosa N. McDonald
Scott A. Stamps
Russell E. Walker+
California State University, Sacramento
Robert M. Bohn
Canisius College
Reginald B. Newman, II
University of Chicago
Charles W. Lake, Jr.*
University of Cincinnati
Hugh H. Hoffman
Cleveland State University
Belva D. Denmark Tibbs
University of Colorado
P. John Lymberopoulos
University of Colorado at Colorado Springs
Eileen S. Burnley
Monica E. Tucker
Columbia University
Thomas D. Flynn
John W. Jordan, II
Richard T. Morena
Marilyn L. Quittmeyer
Washington Scyp*+

University of Denver
Howard W. Grimes+
University of Detroit Mercy
Kathleen D. Aznavorian
Lynn Ellyn
Jeffrey S. Laney
Gary T. Priestap
Drake University
Laurie W. Manny
Eastern Illinois University
Waldo L. Born
Emory University
H. G. Pattillo
John W. Spiegel
Florida State University
Robert A. Gilliam
University of Florida
Liu Pang-Yu
Fort Lewis College
Charles A. Davis
George Washington University
Karen H. Hendershot
Michael J. Krupp
Allan I. Nappen
Georgia State University
Dale N. Davis
Larry F. Miller
Richard S. Novack
University of Georgia
Kathleen P. Wilson
University of Houston
Emile A. Bussemey
Carla G. Glass
Howard University
George E. Miller
University of Illinois
Thomas B. Sleeman
Indiana University
John W. Argo
James A. Campbell
Richard F. Weaver
Christopher T. Winkler
Karen M. Youngpeter
University of Iowa
W. Robert Berg
University of Kansas
Thomas G. Reed
Kent State University
Michael A. Duncan
Dallas P. Lutz
Theodore A. Simon
Louisiana State University
Robert S. Greer
Theodore C. Rogers*
Doyle Z. Williams
University of Maryland
Margaret Hicks
Morton H. Offit
Miami University
Jack R. Anderson

Michigan State University
Rex Chong
Steven J. Frisbie
Edward E. Hagenlocker*
James T. Morton
Andrew G. Sall
University of Michigan
Fred A. Erb
Joanne Meagher+
Philip L. Smith
Middle Tennessee State University
C. Marcella Hayward
University of Minnesota
David G. Croonquist
Fred R. Friswold
Mississippi State University
Ronnie G. Michaels
University of Missouri-Kansas City
Joan L. Hartung
University of Nebraska-Lincoln
Cynthia R. Schmidt
New York University
J. Stuart Dornfeld
Dso Yun Fok
New York University - Graduate School
Daniel E. Davies
Martyrn R. Redgrave
Brett B. Rockkind
North Carolina A&T State University
Phillip Mark
University of North Carolina at Chapel Hill
William K. Rollins
Northeastern University
Baker A. Smith
University of Northern Iowa
Patrick T. Barnes
Northwestern University
Allison L. Marakovic
Paul R. Seegers
E. C. Styberg+
Oakland University
C. S. Bud Kulesza
The Ohio State University
Ralph E. Kent*
Charles Plum
University of Oregon
Kevin W. O'Neill
The Pennsylvania State University
Robert C. Landis+
University of Pennsylvania
Dwight R. Fearins
John C. Hanson+
Robert C. Nevin
Edward A. Schrag

University of Pittsburgh
Robert R. Zahm
Purdue University
Albert E. Avery
University of Rochester
Serge Deteindre
Gary P. Johnson
Paul H. McAfee
Roosevelt University
James F. O'Bert
Robert A. Sperl
Samford University
Carl W. Gooding+
University of San Francisco
David R. Dull
George W. Parkinson
Seattle University
David M. Cass
William B. Gavin
University of South Florida
Edward B. Smith
University of Southern California
Joseph L. Finci
Jay H. Grodin
Southern Illinois University at Edwardsville
Dana C. Walker
Southern Methodist University
Cher E. Thomas Jacobs
Suffolk University
Susan I. Scott
Syracuse University
Frederick H. Weeks
University of Tennessee at Knoxville
Edgar J. Bostick
William J. DeWitt
The University of Texas-Pan American
Leticia Lopez
Texas Tech University
Janice S. Eads
University of Tulsa
Jackie D. Loertcher
Vanderbilt University
J. Mitchell Collins
Virginia Commonwealth University
James R. Bedenbaugh
Vernon A. Quarstein
Douglas E. Ziegenfuss
Virginia Polytechnic Institute and State University
James E. Pearman Jr.
John G. Rocovich, Jr.
Washington and Lee University
George L. Tucker
Richard H. Turrell
University of Washington
Donald W. Gonzales

Special thanks to the BGS President's Club, Key Club Contributors

PRESIDENT'S CLUB (\$1,000+)

University of Georgia
Ogden O. Allsbrook+
University of Illinois
Brian J. Brille
University of Rhode Island
James A. Viehland

KEY CLUB (\$500+)

Northern Arizona University
Dwight A. Combs
University of Pennsylvania
John C. Hanson
Tulane University
Darwin C. Fenner

Washington University
Maria W. G. Schweizer
Christina A. Morrow
Western Illinois University
Allan L. Watson
College of William & Mary
Hays T. Watkins
University of Wisconsin-Madison
Richard J. Howell
Donald L. Stehr
Friedrich J. Von Rueden
University of Wisconsin-Milwaukee
Lea E. Grunig
University of Wisconsin-Oshkosh
Mary P. Locatelli
University of Wisconsin-Whitewater
Joanne Robis

*Directors' Table members
+Multiple/more than club level contributions since the last newsletter

MATCHING GIFT CORPORATIONS

Alliant Energy
Keith A. Bouterse
Beckman Coulter
John P. Wareham
Black & Decker
Ellen K. Hochman
Bridgestone/Firestone Americas Holding
Robert L. Nichols
Houghton Mifflin Corporation
Thomas E. Deming
Household
Susan Mollura
ING Foundation
F. Patrick McConnell
Microsoft Matching Gifts Program
Jean Schenck
Monsanto Fund
James Morrell
Pfizer Foundation
Cynthia A. Holway
E. Thomas Thurber

Those not pictured in this issue or the Summer 2002 issue:



Natasha T. Garrett
Winston-Salem State University



Jessica Schneider
University of Wyoming

Rachel E. Miller
Canisius College

Erika K. Marques
University of Hartford

Jesse Abraham
Monmouth University

Bradach B. Fitzwater
University of Colorado at Colorado Springs

Wong Hang-Yin
Hong Kong University of Science and Technology

Diya Gullapalli
University of Virginia

Crystal Holly
East Tennessee State University

Beta Gamma Sigma
11701 Borman Drive, Suite 295
St. Louis, MO 63146-4199

Email:
bgshonors@betagammasigma.org

Phone: 1-800-337-4677

Fax: 314-432-7083

Web: www.betagammasigma.org

What Can BGS Alumni Chapters Do for You?

If you haven't been paying attention you may not have noticed the diversity of outstanding programs taking place with the Beta Gamma Sigma alumni chapters. Located in 16 major metropolitan areas across the country, the alumni chapters provide a forum for high-achieving business professionals to come together. Whether networking, learning more about a current business topic during a speech or panel discussion, or receiving a directory of other BGS members in their geographic area, members are finding additional value through their local alumni chapters.

In 1998, the Society decided to create a program to "enhance the value of Beta Gamma Sigma for student and alumni members in their professional lives." Out of this plan the Alumni Network was born.

Business Ethics in Minneapolis

On October 29, 2002, over 50 members residing in the Twin Cities area came together for the Kickoff Event of the Minneapolis/St. Paul Area Alumni Chapter. Quiester Craig, past president of Beta



Gary Costley

Gamma Sigma and member of the Board of Governors, was on hand to help celebrate the chapter's beginning.

To highlight the evening, Gary Costley, CEO of Multifoods, Inc. and past dean of the Babcock Graduate School of Management at Wake Forest University, spoke to the group on the subject of business ethics. Having taught on the subject, and more recently taking part in building a company with ethics as a foundation, Costley was adamant that changes must take place.

"What we are going through now, I believe, should be a significant wake-up call for all of us," he said. "There needs to be a fundamental change in the way businesses are organized – the way they're governed, the way they're managed – and it starts with us. Every one of us who has business as a profession has an obligation to the profession."

Costley said managers at all levels have a responsibility to ensure that their companies are doing the right things.

"Every time I talk to our employees – every time – I start with the premise that we are a value-driven organization," he said in

regard to Multifoods, Inc. "We are an organization built on principles, values and trust. We will tolerate mistakes in the organization, but we will not tolerate ethical breakdowns. We have said that we will neither forgive nor forget unethical behavior inside the company. Honesty in our minds is not gray; it's black and white."

"Managing Your Career" in Houston

Also on October 29, the Houston Area Alumni Chapter held a dinner reception featuring a panel discussion entitled "Managing Your Career". Members learned from representatives of leading Houston search firms the proven tactics and strategies that enable successful managers to continue moving up – even in today's tough economic climate.

For a very low attendance fee, members of the Houston Area Chapter got a buffet dinner at The State Grille, the opportunity to network with other Beta Gamma Sigma members working in management positions in Houston, and a panel discussion that was described by one member in attendance as "a great opportunity to hear from professionals who

know what it takes to move a career forward."



Hiking the Marin Headlands in San Francisco

The San Francisco Area Alumni Chapter, established in 2000, has been working to find unique and beneficial events for its members.

From its very successful annual "Careers Program" to "High Technology: The Wireless (R)evolution & Industry Changes 2002", the chapter finds ways to keep its members up-to-date on current business issues. On other occasions, the chapter has been successful bringing Beta Gamma Sigma members together to network in more relaxed atmospheres, like the chapter's barbeque or its hiking trip in the Marin Headlands.

"This past year, we have tried to incorporate different kinds of events into our chapter's calendar," said Dave Yamamoto, president of the chapter. "There is a tendency to stick with the tried-and-true. We still have the three formal events per year, but we have added some informal, fun kinds of events as well.

"While going hiking is only tangen-
(see Alumni on page 5)

Business Achievement Rewarded by Society

The 2002 recipient of the BGS Business Achievement Award is James D. Sinegal, president and CEO of Costco Wholesale Corp. Sinegal was presented with the award at a ceremony at the Albers School of Business and Economics, Seattle University on May 7, 2002.

Presented annually since 1998, the Business Achievement Award honors individuals for significant achievement in business through the traditional corporate route. The achievement may be demonstrated over a career or by a singular achievement that has advanced the field of business and contributed to the community and to humankind.

Established with one store in Seattle, Wash., in 1983, Sinegal helped found Costco Wholesale Corp. with a commitment to providing member customers high-quality merchandise at the lowest possible price. With approximately 4,000 select items that range from salmon



James D. Sinegal, president and CEO of Costco Wholesale Corp. (center), his wife Janet, and Joseph M. Phillips, Dean of the Albers School at Seattle University, take part in the presentation of the BGS Business Achievement Award May 7.

to automobiles, and diamonds to shampoo, Costco has grown to more than 370 stores with \$34 billion in annual sales. Sinegal and his management philosophies have recently been highlighted by a national television

(see Sinegal on page 4)