



**Beta Gamma Sigma**  
**International**  
**EXCHANGE**

**inside this issue**

President's Message	3
Alumni in Atlanta	5
BGS Board Members	6
Contributors	7-8
Medallion Recipients	8

A Marketplace of Ideas for BGS Members Around the World

Volume 1, No. 3 - Fall 2003

## BGS to Upgrade International Exchange in 2004

Beta Gamma Sigma would like to thank you for taking the time to read this issue of the *BGS International Exchange* and tell you about an exciting development for the future of this publication.

A year ago, the Society decided to switch the name of the newsletter from the *BGS News* to its current format. The responses have been very favorable, as members have commented on the new color scheme and look of the publication. The name, colors and overall "look" of the newsletter will not change.

However, starting with 2004, the *BGS International Exchange* will only be produced in a printed format once a year for the entire membership. While that may seem like a step back, this decision will actually result in several steps forward.

For the spring (April) issue, the Society will produce an on-line-only version of the newsletter. Some of the more interesting aspects of Internet publications will be available for this issue, including audio files, links to more information on the subjects covered, and (eventually) video clips. We are working hard to produce an on-line publication that will be informative and entertaining, while at the same time takes advantage of web-related features. The publication will be available as a link off of BetaNet, and we will email it to every member with whom we have an email address on file. So send your email address to [bgshonors@betagammasigma.org](mailto:bgshonors@betagammasigma.org) so you don't miss out on the first email version of the newsletter.

(see *Exchange Upgrade on page 3*)



The 2003-04 Student Leadership Forum was held Oct. 30 - Nov. 2, 2003, in Baltimore, Md. This year, 86 students from collegiate chapters across the United States took part in the Forum, which is designed to help students make decisions about their futures - both personal and professional. Look for the complete story of this year's Forum in an upcoming *BGS International Exchange*.

## Members Find Jobs, Skilled Candidates at BGS CareerCentral

**"Good hours, excellent pay, fun place to work, paid training, mean boss. Oh well, four out of five isn't bad."**

*Employment ad in a Pennsylvania newspaper*

Employment. It's such a simple word, yet throughout history it may be second only to love and relationships in causing the most stress among the world's populations. Mark Twain said, "Work is a necessary evil to be avoided," and many share his views. But with the difficulties facing today's job seekers, to paraphrase a recent MasterCard advertising campaign, finding a good position that enhances self-esteem and allows an individual the opportunity to grow can be *priceless*.

So how does someone find that "dream job?" In today's unsteady job market, with layoffs, "rightsizing" and hiring freezes, it's often a full-time job finding a job. Beta Gamma Sigma is working to assist members searching for job opportunities with the recent launch of the BGS CareerCentral job board. This member benefit seeks to connect "the best in business" - Beta Gamma Sigma members - with those companies and organizations wishing to hire them. It is  
 (see *CareerCentral on page 2*)

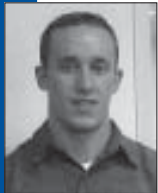
**2003-04  
Beta Gamma  
Sigma  
Scholarship  
Recipients**  
*(those not shown  
in the last issue)*



**Rachel Z.  
Callahan**  
University of  
Alabama at  
Birmingham



**Rebecca E. Tan**  
Bryant College



**Zeth T.  
Herrington**  
Canisius College



**Yeung Oi Ling**  
The Chinese  
University of  
Hong Kong



**Hai Nguyen**  
Fairfield  
University



**Nadene J.  
Lemon**  
Fort Lewis  
College



**Jessica  
Wightman**  
SUNY at  
Geneseo



**Tyler Molnar**  
Georgetown  
University

## CareerCentral (cont. from page 1)

based on the recognition that hiring individuals who have been recognized for their outstanding academic achievement will pay short- and long-term dividends for companies.

With nearly 3,000 members registered for the site, the value of an on-line job board for Beta Gamma Sigma members is evident. Members have informed the Society for years that career assistance would be valuable for them, and BGS CareerCentral is the tool that will hopefully make a difference for many in the future.

While it's nearly impossible to quantify success after only a few months, members continue to respond favorably to the job board. Stories are beginning to emerge about how members have included BGS CareerCentral as a part of their strategy for finding good jobs, and many have reported success. While there is still a long way to go, Beta Gamma Sigma is committed to making the service *the* place for members of the Society to look for career assistance. It is the Society's goal also, and one that will greatly increase the value of the site, that BGS CareerCentral will become *the* place for hiring managers who are seeking the best management personnel for their firms.

Mary Dickinson, a member from St. Louis who participates in the activities of the St. Louis Area Alumni Chapter, has used the service and found it useful. She said she investigated two potential jobs on the site and went on a couple job interviews. She said she sees several positives in using BGS CareerCentral.

"When a potential employer uses the BGS board to seek job candidates, they know that they are drawing from a rich pool of strong candidates," Dickinson said. "This gives the job seeker an automatic advantage from the start. From the job seeker's perspective, they know that they are looking at postings from potential employers that have a great strategy for finding the best, which says a lot about them in return."

While recent media reports make the job market seem bleak for many members who are currently looking for positions, some experts are forecasting brighter days ahead. According to the U.S. Department of Labor's Bureau of Labor Statistics ([www.bls.gov](http://www.bls.gov)), there will be 10 million more job openings than available workers by 2010 in the United States. The last time there was a labor shortage was in 2000, when 4.7 million jobs remained unfilled. Most of us remember that time fondly as employers offered attractive incentive packages and record pay levels to recruit, hire and retain quality employees. Companies were forced to compete on benefits like health insurance and vacation. A return to those days would be a

**"I explored the CareerCentral link the other day and I'm sure it will be helpful in my employment search."**

**Brad Bitzer, member of Beta Gamma Sigma**

welcome development for those on the outside looking in.

A look at the numbers can be astounding. In a category titled "Management, Business and Financial Occupations," the Bureau of Labor Statistics reports that the demand for qualified individuals will increase 13.6 percent by 2010. "Sales and Related Occupations" is projected to see an 11.9 percent increase in the same time period. While those figures alone are impressive, when one considers the number of baby boomers that will be retiring over the next decade, it seems there are better days ahead for job seekers and those looking to move ahead in

their careers.

With these numbers, Beta Gamma Sigma also has a tremendous opportunity to provide a valuable service to corporations looking to fill these upcoming positions.

While Beta Gamma Sigma inducts 20,000 new members each year from the world's best business schools, there is much more to the story. We know that members occupy key management positions at every level – from the two-person financial services firm to the top of the Fortune 500. Beta Gamma Sigma members were not only recognized for their academic accomplishments, they have gone on to become successful managers within their organizations. That is one of the messages the Society is committed to delivering to hiring professionals.

As members become more accustomed to the site's features, they are finding that it really can help them, especially if it's used as part of an overall job search strategy. Some of the most popular on-line job sites include CareerBuilders.com, Monster.com and HotJobs.com. There are also on-line job boards that cater specifically to minority candidates, such as IMDiversity.com and minoritygraduate.com. While all these sites can be useful, none of them offers companies the opportunity to search *exclusively* for those who have graduated – at the top of their class – from the world's best business schools. And members can search for companies that value this select group.

There is no question that job seekers have a variety of directions to go when looking for their next opportunity. Those Beta Gamma Sigma members who have given BGS CareerCentral a try suggest that it is certainly worth the effort.

"I explored the CareerCentral link the other day and I'm sure that it will be helpful in my employment search," wrote Brad Bitzer. "I've already gleaned a great deal of information from it. I appreciate you bringing it to my attention."

Now that we've brought the service to your attention, why not give it a try?

# Message from the President

There are many great joys that come from spending more than 40 years in higher education. One is the opportunity to communicate with those whom you have had contact many years earlier, and the chance to learn something from them as they continue to make their mark on the world.

I was speaking recently with a member of Beta Gamma Sigma – an alumnus of Purdue University. The subject of our discussion was not the honor society, although at some point he mentioned Beta Gamma Sigma. He said he had noticed my photograph in a past copy of the *International Exchange* and commented that he was aware of my participation in the Society. It is a somewhat unusual event that someone recognizes me as part of the Society, although when it does occur I use the opportunity to communicate the value of Beta Gamma Sigma.

On this occasion, however, the member I was speaking to – Ord Elliott, a 1974 PhD graduate – beat me to the punch. With little provocation on my part, he commented that, “It looks like Beta Gamma Sigma has really come alive over the last few years.” This was truly an unexpected surprise, and a satisfying confirmation that the Society is headed in the right direction.

In response, I shared with him the fact that several years ago, when Don Parker was President of Beta Gamma Sigma, the board members engaged in an intensive strategic planning program to focus on how BGS could more effectively serve the needs of its members. The board took on this mission very seriously and as a result, numerous new programs and initiatives have been created. I shared with him several of the Beta Gamma Sigma programs, which I thought might be valuable to him in his future. But more than that, the conversation reminded me that we can all do a better job “getting the message out.” The Society has developed a wonderful list of membership benefits that are utilized by thousands of members, but there are many more members



who remain passively attached to Beta Gamma Sigma since they left their campuses. They are missing a tremendous opportunity to be a part of what is going on – an expansion of benefits and services that is unprecedented in the history of our Society.

Another opportunity that is often missed is communicating the Beta Gamma Sigma story to the corporate community. More and more, companies are realizing the value of reaching out to, hiring, and generally being associated with the honor society for business school programs accredited by AACSB International. They recognize that being associated with “the best in business” makes good business sense.

The bottom line to all of this? Beta Gamma Sigma members should remember the value of the Society in relation to their own businesses and others with whom they have relationships. You were recognized for being the best while you were in college, and now you should consider what that is worth for your organization. Perhaps you should consider looking for fellow members when making hiring decisions. Or maybe contacting the Beta Gamma Sigma chapter at your local college or university – and getting involved – would provide some benefit. Finally, consider the Beta Gamma Sigma alumni chapter (if your area has an alumni chapter installed) when you are looking to network with other professionals in your geographic area.

More and more, Beta Gamma Sigma is being recognized outside our membership as a source for identifying high achievers. Be prepared to take advantage of that, and consider ways you can help expand recognition of our Society.

This is a very exciting time for Beta Gamma Sigma.

**Dennis J. Weidenaar**

its membership.

Look for these exciting changes in 2004. As mentioned before, it is very important for you to have a current email address on file

with the Central Office so that you stay informed and updated on all the developments of your honor society.

As Dennis Weidenaar said in the “Message from the President” above, “This is a very exciting time for Beta Gamma Sigma.” Make sure you’re a part of it.



**Todd D. Rosen**  
University of Houston-Downtown



**Kristen M. Overturf**  
La Salle University



**Evan J. Weinstein**  
Longwood University



**Stephanie A. Gibson**  
University of Louisiana at Monroe



**Renee Ciesniewski**  
Loyola Marymount University



**Emily Wiskirchen**  
Marquette University



**Thomas Dunne**  
Memorial University of Newfoundland



**Tanja Buchheim**  
Middle Tennessee State University



**Maria Kouznetsova**  
University of Minnesota Duluth

## Exchange Upgrade (cont. from page 1)

An even more exciting change will take place with the summer issue. We will be mailing to each member an expanded print version of the *BGS International Exchange* – at least 16 pages long (compared to the current eight pages) – which will allow us to get more in-depth on topics of interest to members. This new “mini-magazine” should be a substantial improvement over the current format and should allow the Society to communicate even better with

*International*  
**EXCHANGE**  
2004

with the Central Office so that you stay informed and updated on all the developments of your honor society.

As Dennis Weidenaar said in the “Message from the President” above, “This is a very exciting time for Beta Gamma Sigma.” Make sure you’re a part of it.

# List of BGS Programs Continues to Grow



**Amanda B. Jackson**  
Mississippi State University



**Kelly A. Alston**  
North Carolina A&T State University



**Katie McDermott**  
University of Notre Dame



**Grant Cyrus**  
Oregon State University



**John Muto**  
Salisbury University



**Ausra Pumputis**  
Santa Clara University



**Erica Compton**  
University of Scranton



**Aleena von Berks**  
Seattle Pacific University



**Davina McKenzie**  
Seton Hall University

## Save2Help on BetaNet

Have you finished up your holiday shopping or are you ready to jump in with the rest of the “last-minute” crowd? If the latter applies to you, consider checking out Save2Help, the on-line shopping opportunity that is found on the BetaNet website.

On the site, you can find hundreds of great retailers giving great deals on all kinds of items. From toys to office equipment, books to electronics, you can find great deals on whatever you’re looking for.

Just go to <http://www.save2help.com/BGS/> to get started. Or, you can find Save2Help and other great benefit programs on the “Member Benefits & Programs” page on BetaNet.

## Upgraded BetaLink On-Line Community

Beta Gamma Sigma has featured an on-line community for some time, but now it is upgraded and expanded to better fit our membership. It still boasts some great features – on-line directory where members can update their contact information, permanent email forwarding, calendar of events, BGS CareerCentral, surveys, etc. – but now it’s even better and easier to use.

Check out BetaLink today by accessing the BetaNet homepage and selecting the “BetaLink On-Line Community” link. The community is a great way to stay connected to the Society and ensure that you’re getting the most from your membership.

## BGS Alumni Network

Looking to network with “the best in business” in your city? Maybe you’re new to the area and would like to make some connections with other professionals.

Or perhaps you’re looking for an opportunity to learn more about the local business community. Chapters hold events with speakers and panel discussions that offer a chance to learn more about issues in today’s marketplace.

Whatever the reason, members should consider taking part in the activities of their local alumni chapter. With 16 chapters in major metropolitan areas across the country, approximately 50 percent of our membership has access to a chapter. It’s a great way to expand your network, learn the latest trends, meet new people and have a good time. Check the BetaNet website to find the alumni chapter nearest you.

## Business 2.0

New members (with a U.S. address) inducted into Beta Gamma Sigma in the 2003-04 academic year will receive a complimentary two-year (24-issue) subscription to Business 2.0 magazine, which examines business, technology and

innovation. It discovers and reports on the smartest, most innovative business practices and the people behind them. It delivers surprising, useful insights, and explains how to put them to work.

Business 2.0 is published monthly, except for two issues combined periodically into one and occasional extra, expanded, or premium issues. Combined, expanded and premium issues count as two subscription issues.

## B-Zine Email Newsletter

Are you receiving the BGS email newsletter, the *B-Zine*? If not, you should join the 60,000 members who get the newsletter each month. Just send your full name, the school where you were inducted into Beta Gamma Sigma, email and mailing address to [bgshonors@betagammasigma.org](mailto:bgshonors@betagammasigma.org).

What is covered in the *B-Zine*? In one issue, valuable advice about 529 Plans – the tax-free college savings plans that have exploded in popularity. The September 2003 issue explored the recent run of computer viruses and the damage they have done to business. Anything business related that is important to business professionals is a potential topic for the *B-Zine*.

If you would like to submit an idea for the *B-Zine*, your input is always welcome. If you would like to be among the more than 60,000 members who receive timely information on current business subjects, send your email address to the Central Office at [bgshonors@betagammasigma.org](mailto:bgshonors@betagammasigma.org).

## Avis Car Rental Discount

Beta Gamma Sigma members receive special Avis car rental rates by using Avis Worldwide Discount Number **L492070**.

Not only do members receive a discount on their car rental, but the Society benefits as well. Every time members use the number on their Avis contracts, regardless of other over-the-counter promo rates or discount agreement rates, Beta Gamma Sigma accrues benefits.

## BGS LogoLine Apparel and Gifts

Would you like to display your pride in Beta Gamma Sigma at the office? How about a gift for that special BGS member? The BGS LogoLine has what you need.

Go to [www.betagammasigma.org/regalia.htm](http://www.betagammasigma.org/regalia.htm) to check out the latest selection of BGS apparel and gift item, or call or email the Central Office to receive the new full-color flyer.

These are a few of the many benefits available to Beta Gamma Sigma members. To find details on all of the programs, visit BetaNet and select the “Member Benefits & Programs” link. There’s something for everyone; see what’s there for you!

# ALUMNI IN ATLANTA

## BUILDING THE ALUMNI NETWORK



Above: Members listen to Sam Massell's presentation July 15, 2003.

Sam Massell, former mayor of the City of Atlanta, speaks to the Atlanta Area Alumni Chapter on July 15, 2003.



Clockwise from above: Tom Schroeder, president of the Atlanta Area Alumni Chapter, congratulates Neera Sharma Dahal, the recipient of the chapter's 2003 Beta Gamma Sigma Scholarship.

Members take part August 19, 2003 in the chapter's Brewery Tour. Owners of Five Seasons Brewery discussed the restaurant and mini-brewery business.

Some of the participants take a break on August 19.

After the presentation was complete on July 15, members had the opportunity to network with others in the Atlanta Area, as they do the third Tuesday of each month.



Go to [WWW.BETAGAMMASIGMA.ORG](http://WWW.BETAGAMMASIGMA.ORG) to find the alumni chapter in your area



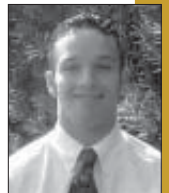
**Michael Gustantino**  
Shippensburg University



**Brett E. Price**  
Southeast Missouri State University



**Nikhila Srirangpatna**  
Southwest Texas State University



**Luis S. Moroney**  
Stetson University



**Lauren R. Martz**  
Towson University



**Alexis Ferraro**  
Trinity University



**Brendan L. Duede**  
Truman State University



**Valeriya Rouzanova-Thompson**  
University of Vermont



**Teresa Arroyo**  
Western Carolina University

## Directors' Table Expands to Include Five New Members in 2003

Beta Gamma Sigma is pleased to announce the addition of five new members to its Directors' Table. Members of this prestigious group earned their Beta Gamma Sigma membership as undergraduate or graduate students and have risen to become top senior officers, principal owners, or senior partners in Fortune 1000 firms or their equivalents. Members signify their dedication to the mission and objectives of the Society by contributing to Beta Gamma Sigma.

Because of their induction into the Society during their collegiate careers, Directors' Table members highlight the relationship between success in business and management subjects and high achievement in the professional world. They exemplify the ideals of effective business and managerial leadership in conjunction with professional integrity.

Those added to the Beta Gamma Sigma Directors' Table in 2003 include:



**Archie W. Dunham**  
Chairman,  
ConocoPhillips  
*University of Oklahoma, 1966*

**Michael D. Lockhart**  
Chairman and CEO,  
Armstrong Holdings, Inc.  
*University of Chicago, 1975*



**James E. Rogers**  
Chairman, President  
and CEO,  
Cinergy Corp.  
*University of Kentucky, 1970*

**Bruce Rohde**  
Chairman, CEO and President,  
ConAgra Foods, Inc.  
*Creighton University, 1970*



**Arthur F. Weinbach**  
Chairman and CEO,  
Automatic Data  
Processing, Inc.  
*University of Pennsylvania, 1964*



## Meet the BGS Board Members

**Bernard J. Milano** is president of the KPMG Foundation, an organization dedicated to identifying needs in the academic and business community and responding with ideas, actions and financial support.

Through his work as a national partner in charge of recruiting for the professional services firm KPMG, Milano founded the PhD Project in the early 1990s. He recognized that while



**Bernard J. Milano**

the firm was hiring thousands of business school graduates, the vast majority were white. So with a simple idea – the way to increase minority

participation in graduate business programs is to increase the number of minority business faculty – the PhD Project was born.

Each year, the PhD Project, supported by KPMG and other corporations, organizations and foundations, recruits thousands of minority businesspeople to apply for doctoral degrees in business. The project provides mentoring, help with applications and an informal support network. And the results have been dramatic. PhD Project students have found posts throughout the country.

In 1993, of the more than 24,000 doctorally qualified business faculty, fewer than 300 were minorities. By 2004, that number should exceed 850.

Milano joined the Beta Gamma Sigma Board of Governors in 2002. In that year, he received the Beta Gamma Sigma Medallion for Entrepreneurship for his work on the PhD Project.

**Thomas G. Gutteridge** is the Dean of the College of Business Administration at the University of Toledo. He was elected to join the Beta Gamma Sigma Board of Governors in 2002 and is currently scheduled to serve through 2006.



**Thomas G. Gutteridge**

Prior to his arrival at the University of Toledo, Dr. Gutteridge twice served as dean at other institutions: Southern Illinois University at Carbondale for nine years and at the University of Connecticut for 10 years.

Dr. Gutteridge earned both his master's and doctoral degrees in industrial administration from Purdue University. He earned his bachelor's of science in industrial Engineering from the General Motors Institute.

A winner of the Walter F. Storey Award for Leadership and Professional Contribution in the Career Development field, Dr. Gutteridge is known for his strong leadership. He is credited with helping to raise the University of Connecticut's school of business endowment from \$1 million to \$23 million and gaining funding from the U.S. Department of Education for the Center for International Business Education and Research, one of only 30 such centers nationwide.

Along with his service and membership in Beta Gamma Sigma, Dr. Gutteridge is a member of Golden Key Honor Society. He is an accomplished researcher, having numerous books and articles published.

# Beta Gamma Sigma Contributors

June 16 - October 15, 2003

Contributors to Beta Gamma Sigma are recognized in club categories and named in each issue of the *BGS International Exchange*. Members of the President's Club have given \$1,000 or more; the Key Club - \$500 or more; and the Century Club - \$100 or more. Gifts at the President's Club and Key Club levels are recognized on page 8.

## CENTURY CLUB

**University of Akron**  
Michael J. Berthelot

**University of Alabama**  
Susan O. Rheney  
James P. Tate

**Auburn University at Montgomery**  
Kath M. Carter

**Baruch College, CUNY**  
Anthony K. Adje  
Mary M. Hile  
William J. McCarron  
Kim Ho Shao

**Boston College**  
James R. Kearnan

**Bowling Green State University**  
Michael W. Hoffman

**University of Bridgeport**  
Robert L. Jernoske, Jr.

**California State University, Chico**  
Gary E. Joslyn

**California State University, Long Beach**  
Dan M. Berns  
Rosa N. McDonald  
Thomas W. Wilson

**California State University, Sacramento**  
Kathryn Traversi  
Daniel K. Turner

**University of California, Los Angeles**  
Al A. Finci

**Canisius College**  
Reginald B. Newman, II

**University of Chicago**  
John T. Baily  
J. Fred Weston

**University of Colorado at Colorado Springs**  
Eileen S. Burnley

**University of Colorado at Denver**  
Cynthia A. Oster

**University of Colorado at Boulder**  
Carol R. Gruen  
Katherine L. M. Hart  
Ronald M. Shults

**University of Connecticut**  
Gregory K. Phelps

**University of Denver**  
Lee K. Forsythe  
Howard W. Grimes

**University of Detroit Mercy**  
J. F. Bradley, Jr.

**East Carolina University**  
August F. Malson, II  
Ray G. Stephens

**Fordham University**  
Colette M. Dalferes  
Philip M. Halpern  
Vincent R. Reinhart

**Georgia Southern University**  
Mary F. Hazeldine

**Georgia State University**  
Gary L. Reynolds

**University of Houston**  
Paul S. Lindholm

**University of Illinois**  
Thomas B. Sleeman

**Indiana University**  
Allen E. Rosenberg

**Kansas State University**  
Michael A. Duncan

**University of Kansas**  
Edward C. Burns

**Louisiana State University**  
Virginia J. Kahnt  
Doyle Z. Williams

**University of Maine**  
David J. Breau

**Marquette University**  
Theodore C. Rogers\*

**University of Maryland**  
Margaret Hicks  
Morton H. Offit

**University of Miami**  
Zsolt T. Agardy

**Michigan State University**  
Edward E.  
Hagenlocker\*+  
Philip E. Lippincott\*

**University of Michigan**  
Fred A. Erb  
J. D. Williamson

**Mississippi State University**  
Ronnie G. Michaels

**University of Missouri-St. Louis**  
Mary A. Tipton

**Montclair State University**  
David C. Zimmerman

**New York University-Graduate School**  
Lucy A. Kramer  
Andrew V. Vindigni

**North Carolina A&T State University**  
Bowman K. Burton

**University of North Carolina at Chapel Hill**  
William K. Rollins

**University of North Carolina at Greensboro**  
Gloria L. Keesee

**Northeastern University**  
Denise M. Sample

**Northwestern University**  
Edward J. Campbell  
Lawrence R. Kosinski  
Edward C. Messinger  
Ernest C. Styberg+

**The Ohio State University**  
Kenneth R. Kidd, Jr.  
Charles Plum

**University of Oregon**  
Kevin W. O'Neill

**University of Pennsylvania**  
Dwight R. Fearins  
Robert C. Nevin

**University of Pittsburgh**  
Frank L. Corsetti  
Donald D. Lennox\*  
Robert R. Zahm

**Radford University**  
Stephen P. Kline+

**University of Rochester**  
Serge Deteindre  
Gary P. Johnson

**Rutgers, State University of New Jersey Newark**  
Frank L. Stifelman  
Vincent Tallarida

**San Diego State University**  
Debra A. Ernst+  
Gene A. Lynes

**San Jose State University**  
Nancy A. Goldcamp  
Reginald R. Lester

**Santa Clara University**  
Mark J. Bluth  
Jane G. Evans  
Leslie A. Roberts  
Steven Schlosser

**Seattle University**  
William B. Gavin

**University of South Florida**  
Edward B. Smith

**University of Southern California**  
Jay H. Grodin  
Joann M. McClure  
Seagren

**Southern Methodist University**  
Cher E. Thomas  
Jacobs

**St. John's University**  
Irene C. Rafferty  
Mapa

**Syracuse University**  
Frederick H. Weeks

**Temple University**  
Stephen H. Morris  
Michael N. Tillger

**The University of Texas at Austin**  
Jason H. Downie  
Allen R. Pierce  
Stephen M. Szigethy  
Clyde L. Wilson, Jr.

**University of Tulsa**  
Bruce E. Davis

**University of Virginia**  
Sharon H. Yip

**Washington & Lee University**  
Richard H. Turrell

**Washington University**  
Gary W. Rust

**Wayne State University**  
James B. Kruzan

**Winthrop University**  
Patsy R. Feanny

**University of Wisconsin-Madison**  
Friedrich J. Von Rueden

**University of Wisconsin-Oshkosh**  
Sharon F. Alferi

**Wright State University**  
Charles J. Weber

**Jennifer Dinger**  
University of Arkansas  
Gold Chapter



**Amanda Weare**  
Stephen F. Austin State University  
Silver Chapter



**Nicholas D. Vidrine**  
University of Louisiana at Monroe  
Bronze Chapter



**Curt D. Stepp**  
Eastern Illinois University  
Honorable Mention



**Jennifer L. Wange**  
James Madison University  
Honorable Mention



**Neera Sharma Dahal**  
Atlanta Area Alumni Chapter



**Michael C. McMahon**  
San Francisco Area Alumni Chapter



## Those not pictured

**Richard Rogers**  
Butler University

**Kara B. Holloway**  
East Tennessee State University

**Henry Wong**  
Hong Kong University of Science and Technology

**Patrick J. Ryan**  
Indiana University South Bend

**Thomas Nobili**  
La Salle University

**Christopher Major**  
University of Louisiana at Lafayette

**Tamara Beck**  
Loyola College in Maryland

**J. Maria Zagrodzka**  
Purdue University

**Jill M. Finley**  
Radford University

**Jennifer L. Shaw**  
University of Southern Maine

\*Directors' Table members  
+Multiple/more than club level contributions

# BGS Medallion for Entrepreneurship Recipients - 2003



## Frank J. Belatti

Frank J. Belatti is the Chairman, CEO and Founder of AFC Enterprises, Inc. In 1992, Belatti took the helm of AI Copeland Enterprises to lead the company out of bankruptcy reorganization. After changing the name to AFC Enterprises, Belatti focused his efforts not on mere survival for the old company, but on building a new, thriving company.

From the outset, Belatti managed the company with vision and urgency. He immediately instituted the *100-Day Action Plan* to address employee and franchisee relations, operations improvements and image enhancement. He later launched *New Age of Opportunity*, an innovative corporate philosophy and operational initiative based on diversity and individual entrepreneurship. The initiative focuses on expanding franchise ownership opportunities for women and minorities, cultivating new supplier relationships for these same under-represented groups, attracting and developing outstanding employees, and enhancing the quality of life for people through meaningful community service.

In 2001, AFC debuted at 44th employer overall, and 3rd best employer for blacks in Fortune Magazine's 50 Best Companies for Minorities.

Belatti was nominated for the Medallion for Entrepreneurship by the Beta Gamma Sigma Chapter at the University of Notre Dame.

## Juan Rodriguez

Juan Rodriguez is Chairman and Chief Technologist of Exabyte Corporation. Rodriguez' career spans more than four decades of experience in the computer industry, focused almost entirely on data storage. He has extensive experience in leading successful storage companies.

In 1969, after several years in tape technology engineering at IBM, Rodriguez co-founded Storage Technology Corporation. In 1985 he left StorageTec to co-found Exabyte Corporation. He also co-founded in 1996 the Ecrix Corporation. He has held a variety of executive level positions at each of the firms and continues his position with Exabyte.

Rodriguez is a professor in the College of Engineering and Applied Science at the University of Colorado, and Co-Executive Director of the Center for Entrepreneurship, a joint venture between the College of Engineering and Applied Science and the Leeds School of Business at the University of Colorado. Rodriguez' awards and accomplishments are numerous, and he has served on the boards of several data storage companies, including Iomega, Maxtor and Vixel.

Rodriguez was nominated for the Medallion for Entrepreneurship by the Beta Gamma Sigma Chapter at the University of Colorado.



## BGS President's Club, Key Club and Special Contributors

JUNE 16 - OCTOBER 15, 2003

### PRESIDENT'S CLUB (\$1,000+)

#### Kenneth A. Sloan

Cleveland State University

#### John C. Hanson

University of Pennsylvania

#### Donald R. Beall\*

University of Pittsburgh

#### John H. Martinson

Southern Illinois University at Edwardsville

### KEY CLUB (\$500+)

#### Carl W. Gooding

University of Georgia

#### Kathleen S. McNichol

La Salle University

#### Bernard J. Milano

North Carolina A&T State University

#### John C. Hanson

University of Pennsylvania

### MEMORIAL GIFTS

DePaul University

Alan J. Bernick

Gift in memory of Bonnie F. Bernick

### MATCHING GIFT CORPORATIONS

#### Alliant Energy Foundation

Keith Bouterse

#### AON Foundation

Lisa Kremer

#### Bank of America

Beth Inlander

Paul Lindholm

Carol Schueler

#### Chevron Texaco

George G. Nirr

#### Gartner Charity Fund - Fidelity

Investments

Dorothy J. Law

### STUDENT FORUM SPONSORS

#### BusinessWeek

Corporantes, Inc.

Creative Printing Services

Dow Jones & Co./Wall Street Journal

Ernst & Young LLP

KPMG Foundation

Leadership Is For Everyone! (LIFE!)

SouthTrust Bank

#### iPay, LLC

Weldele P. Gerard

#### Key Bank National Association

unknown contributor

#### Pfizer Foundation

Cynthia A. Holway

#### Saint-Gobain Corporation

Foundation

Dawn Murphy

#### Verizon

Deborah Lambert

### Beta Gamma Sigma

125 Weldon Parkway

Maryland Heights, MO 63043

Email:

[bgshonors@betagammasigma.org](mailto:bgshonors@betagammasigma.org)

Phone: 800-337-4677

314-432-5650

Fax: 314-432-7083

Web: [www.betagammasigma.org](http://www.betagammasigma.org)

Beta Gamma Sigma is a not-for-profit, 501(c)(3) organization.